

♩ = 118

Dobranocka / Kabanos / Flaki z olejem / Standard Tuning EADGBE / Intro Zwrotka 1

1

TAB

16

Refren 1

31

3 3 3 3 3 3 6 6 6 6 6 6 9 9 9 9 9 9 4 4 4 3 3 3 3 3 3
4 4 4 4 4 4 7 7 7 7 7 7 9 9 9 9 9 9 4 4 4 4 4 4 4 4 4
2 2 2 2 2 2 5 5 5 5 5 5 7 7 7 7 7 7 2 2 2 2 0 2 2 2 2 2

36

6 6 6 6 6 6 9 9 9 9 9 9 4 4 4 14 14 14 14 14 14
7 7 7 7 7 7 9 9 9 9 9 9 4 4 4 17 17 17 17 17 17
7 7 7 7 7 7 7 7 7 7 7 7 2 2 2 2 0 3 0
5 5 5 5 5 5 7 7 7 7 7 7 2 2 2 2 0 3 0

full full full full full full

41

full full full full full full full full full full full full full full full full full full full

12 12 12 11 11 11 14 14 14 17 17 17 12 12 12 11 11 11
15 15 15 14 14 14 17 17 17 20 20 20 15 15 15 14 14 14

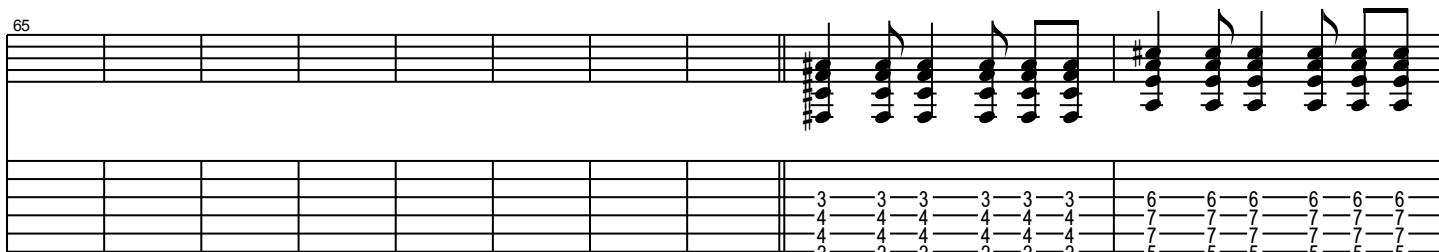
Zwrotka 2

49

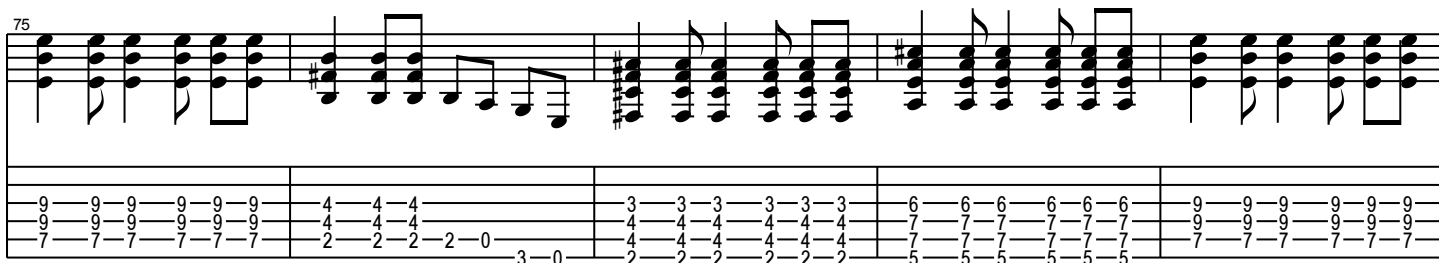


Refren 2

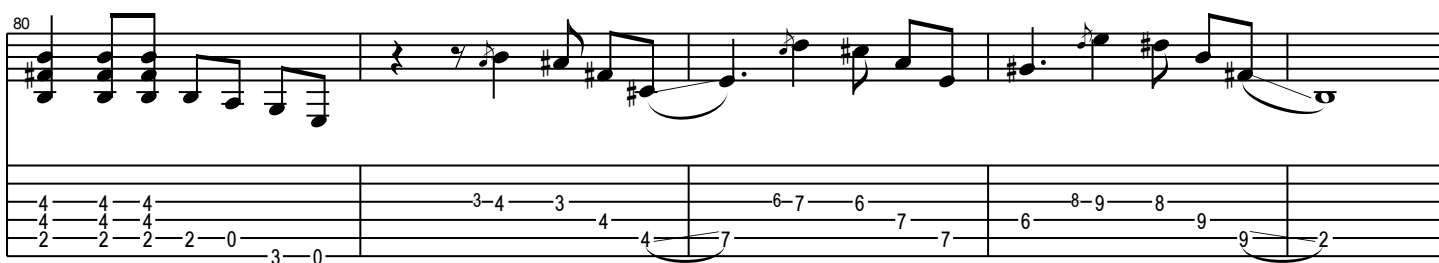
65



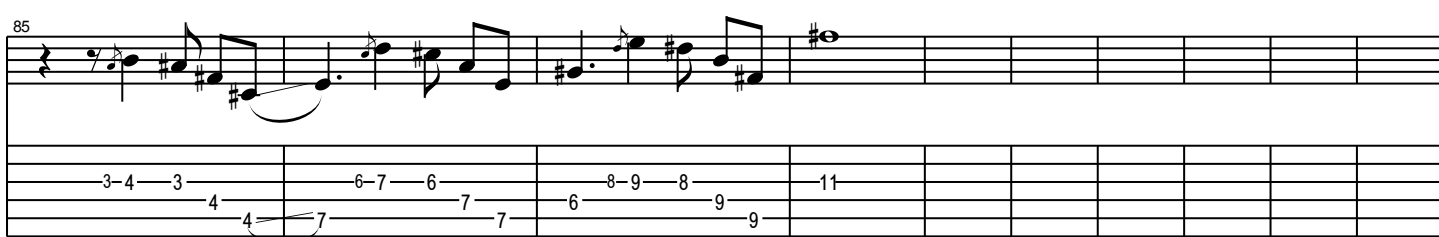
75



80



85



Bridge

95



Refren 3

111

The musical score for 'The Rose Tree' is presented in two systems. The first system consists of a vocal melody line on a five-line staff and a guitar accompaniment line below it. The melody begins with a treble clef, a key signature of one sharp (F#), and a 3/4 time signature. It features a series of eighth and sixteenth notes, with a repeat sign after the first four measures. The guitar part is written in a simplified style, using numbers 1-7 to indicate fret positions on the strings. The second system continues the melody and guitar accompaniment, with the melody line ending in a double bar line. The guitar part continues with a final sequence of notes.

119

4 4 4 3 3 3 6 6 6 9 9 9 4 4 4 4 4 4 2 2 2 3 0 2 2 2 4 4 4 7 7 7 9 9 9 7 7 7 2 2 2 3 0 2 2 2 4 4 4 7 7 7 9 9 9 7 7 7 2 2 2 3 0

Solo

Outro

124

full

16 14 16 16 14 16 16 14 16 16 16 16 14 16

[illegible]